

TRUSTED SINCE 1926

**BONIDE**<sup>®</sup>

ACCEPTED  
FOR REGISTRATION

Sep 10, 2024

New York State Department  
of Environmental Conservation  
Division of Materials Management  
Pesticide Product Registration

# Malathion<sup>®</sup> Insect Control

Controls a great diversity of listed insects:

Including aphids, spider mites, scales, as well  
as a wide range of other sucking &  
chewing insects attacking listed  
fruits, vegetables, ornamentals  
**AND** controls mosquitoes.

**ACTIVE INGREDIENT:**

Malathion .... (CAS No. 121-75-5) . 50.00%

**OTHER INGREDIENTS:** ..... 50.00%

**TOTAL:** ..... 100.00%

This product contains petroleum distillate.

1 gallon contains 4.37 lbs. of malathion

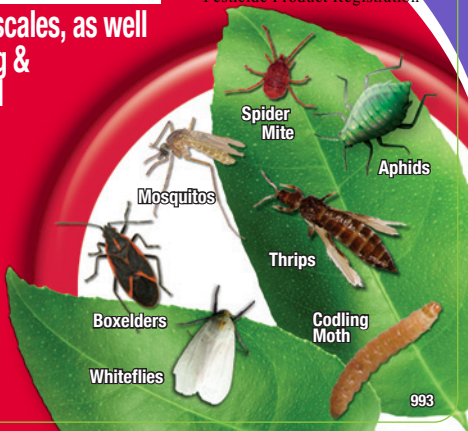
For outdoor use only.

EPA Est. No. 4-NY-1 EPA Reg. No. 4-99

**Keep Out Of Reach Of Children**

**CAUTION** (See Back Panel for Additional  
Precautionary Statements & First Aid)

**Net Contents 32 FL. OZ. (946 ML.)**



# Malathion<sup>®</sup>

## Insect Control

- ✓ Use on asparagus, tomatoes, lettuce, melons, squash, blackberries, citrus fruits, listed ornamental plants and shrubs, roses and carnations, plus other listed fruits and vegetables
- ✓ Controls scales, thrips, leafhoppers, Japanese beetles, codling moths and other listed sucking and chewing insects
- ✓ Also controls mosquitoes and small flying insects

EPA Est. No. 4-NY-1 EPA Reg. No. 4-99  
©Bonide Products, LLC All Rights Reserved  
Bonide Products, LLC  
6301 Sutliff Road  
Oriskany, NY 13424

BN

Quart



## DIRECTIONS FOR USE

For outdoor use only.

It is a violation of Federal law to use this product in a manner inconsistent with its labeling.

For resistance management, this product contains a Group 1B insecticide. Any insect/mite population may contain individuals naturally resistant to this product and other Group 1B insecticides. The resistant individuals may dominate the insect/mite population if this group of insecticides/acaricides are used repeatedly in the same fields. Appropriate resistance-management strategies should be followed.

Reporting Ecological Incidents: To report ecological incidents, including mortality, injury, or harm to plants and animals, call 1-800-536-8231.

## USE RESTRICTIONS

### **Restrictions on residential fruit trees and vegetable gardens**

- Application equipment limited to hand-pump sprayers, hose-end sprayers, and sprinkler cans.
- Do not apply more than two applications per year.
- Minimum retreatment interval is 10 days.

### **Restrictions on Ornamental Plants, Vines, Shrubs and Ornamental/ Shade Trees**

- Spot treatment only
- Do not apply more than two applications per year.
- Minimum retreatment interval is 10 days.

### **Household/domestic dwelling (perimeter outdoor only)**

- Apply a coarse spray in a two-foot wide or less band from the base of a man-made structure and up to two feet on wall surfaces.
- Do not apply more than 4 applications per year.
- Minimum retreatment interval is 7-days.
- Do not apply by ground within 25 feet of aquatic habitats (such as, but not limited to, lakes, reservoirs, rivers, permanent streams, wetlands or natural ponds, estuaries, and commercial fish farm ponds).
- Do not spray the product within 25 feet of aquatic habitats (such as, but not

## USE RESTRICTIONS Continued

limited to, lakes, reservoirs, rivers, permanent streams, wetlands or natural ponds, estuaries, and commercial fish farm ponds).

- Do not apply directly to or allow the product to enter sewers or storm drains, or to any area like a drain or gutter where drainage to sewers, storm drains, water bodies, or aquatic habitat can occur.
- Do not allow the product to enter any drain during or after application.
- Do not apply directly to impervious horizontal surfaces such as sidewalks, driveways, and patios except as a spot or crack-and-crevice treatment.
- Do not apply to vertical surfaces directly above pervious or impervious surfaces that drain into ditches, storm drains, gutters, or surface waters.
- Do not apply or irrigate to the point of runoff.

Do not apply this product when a storm event likely to produce runoff from the treated area is forecasted (by NOAA/National Weather Service, or other similar forecasting service) to occur within 24 hours following application.

Following best management practices can help reduce risk to terrestrial pollinators. Examples of best management practices include applying pesticides in the evening and at night when pollinators are not foraging and avoiding applications to flowering plants. For additional resources on pollinator best management practices, visit <https://www.epa.gov/pollinatorprotection/find-best-management-practices-protect-pollinators>.

## PRECAUTIONS AND RESTRICTIONS

Not for use on plants being grown for sale or other commercial use, or for commercial seed production, or for research purposes. Use on listed fruits and vegetables is limited to home gardens.

- DO NOT APPLY THIS PRODUCT IN A WAY THAT WILL CONTACT ANY PERSON OR PET, EITHER DIRECTLY OR THROUGH DRIFT. KEEP PEOPLE AND PETS OUT OF THE AREA DURING APPLICATION.
- Do not allow people or pets to enter the treated area until sprays have dried.
- When applied as a fogger, do not enter treated area until vapors, mists and aerosols have dispersed.
- Do not apply this product through any type of irrigation system.
- This product may cause spotting on automobile paint finish. Cars should not be sprayed directly. If accidental exposure occurs, the car should be washed immediately.

This product controls a great diversity of listed insects; including aphid, spider mites, scales, as well as a wide range of other sucking and chewing insects attacking listed fruits, vegetables and ornamentals, and controls mosquitoes.

For proper mixing, fill the spray tank with at least  $\frac{3}{4}$  gallon of water before this product is added. Shake sprayer occasionally or agitate to keep spray particles in suspension during application. Follow spray schedule given in SPRAY CHART below.

For Hose-end Sprayer Application: Use a hose-end sprayer that can be adjusted to provide a dilution ratio of approximately 1 fl. oz. of this product per gallon of spray.

For Watering Can Application: See SPRAY CHART for use rates. Apply by gently sprinkling 1 gallon of mixture over foliage.

### SPRAY CHART

Use the higher rate when insect pressure is heavy

Crop	Insects	When to Apply	Amount/Gal. Water	Comments
Asparagus	asparagus beetle, asparagus aphid, thrips	Make up to 2 applications per year – at least 10 days apart. Do not apply within 1 day of harvest.	½ to 1½ fl. oz. to cover 1,000 to 3,500 sq. ft.	Do not exceed 1½ fl. oz./1000 sq. ft. per single application.
Beans (Lima, Green, Snap, Navy, Red, Kidney, Wax, Cowpeas, Blackeyed Peas)	Mexican bean beetle, spider mites, Japanese beetle, aphids, cucumber beetle	Make up to 2 applications per year – at least 10 days apart. Do not apply within 1 day of harvest.	¼ to ¾ fl. oz. to cover 1,000 to 3,500 sq. ft.	Do not exceed ¾ fl. oz./1000 sq. ft. per single application. Do not use on bean crops used for forage or hay.
Tomatoes	spider mites, aphids	Make up to 2 applications per year – at least 10 days apart. Do not apply within 1 day of harvest.	½ to 2 fl. oz. to cover 1,000 to 3,500 sq. ft.	Do not exceed 2 fl. oz./1000 sq. ft. per single application.
Pumpkins	aphids, mites, squash vine borers	Make up to 2 applications per year – at least 10 days apart. Do not apply within 1 day of harvest.	½ to 1¼ fl. oz. to cover 1,000 to 3,500 sq. ft.	Do not exceed 1¼ fl. oz./1000 sq. ft. per single application.

<b>Crop</b>	<b>Insects</b>	<b>When to Apply</b>	<b>Amount/Gal. Water</b>	<b>Comments</b>
Eggplant	aphids, spider mites, lace bugs	Make up to 2 applications per year – at least 10 days apart. Do not apply within 3 days of harvest.	½ to 2 fl. oz. to cover 1,000 to 3,500 sq. ft.	Do not exceed 2 fl. oz./1000 sq. ft. per single application.
Onions	thrips, onion maggots	Make up to 2 applications per year – at least 10 days apart. Do not apply within 3 days of harvest.	½ to 2 fl. oz. to cover 1,000 to 3,500 sq. ft.	Do not exceed 2 fl. oz./1000 sq. ft. per single application.
Peppers	aphids, pepper maggots	Make up to 2 applications per year – at least 10 days apart. Do not apply within 3 days of harvest.	½ to 2 fl. oz. to cover 1,000 to 3,500 sq. ft.	Do not exceed 2 fl. oz./1000 sq. ft. per single application.
Rutabagas	aphids	Make up to 2 applications per year – at least 10 days apart. Do not apply within 7 days of harvest.	½ to 1¼ fl. oz. to cover 1,000 to 3,500 sq. ft.	Do not exceed 1¼ fl. oz./1000 sq. ft. per single application.
Sweet Potato	leafhoppers, morningglory leafminer	Make up to 2 applications per year – at least 10 days apart. May be applied up to harvest.	½ to 2 fl. oz. to cover 1,000 to 3,500 sq. ft.	Do not exceed 2 fl. oz./1000 sq. ft. per single application.
Potatoes (White or Irish)	false chinch bugs, aphids, leafhoppers, mealybugs	Make up to 2 applications per year – at least 10 days apart. May be applied up to harvest.	½ to 2 fl. oz. to cover 1,000 to 3,500 sq. ft.	Do not exceed 2 fl. oz./1000 sq. ft. per single application.
Lettuce	leafhoppers, aphids, cabbage looper	Make up to 2 applications per year – at least 10 days apart. Do not apply within 14 days of harvest.	¾ to 2¼ fl. oz. to cover 1,000 to 3,500 sq. ft.	Do not exceed 2¼ fl. oz./1000 sq. ft. per single application.

Crop	Insects	When to Apply	Amount/Gal. Water	Comments
Corn (Sweet and Pop)	aphids, sap beetle, thrips, grasshoppers, corn rootworm adults (for protection of silks)	Make up to 2 applications per year – at least 10 days apart. Do not apply within 5 days of harvest. For grasshoppers – make full coverage application to foliage when nymphs are young. For corn rootworm adults – make full coverage application when adult beetles become abundant.	½ to 1¼ fl. oz. to cover 1,000 to 3,500 sq. ft.	Do not exceed 1¼ fl. oz./1000 sq. ft. per single application.
Melons (Cantaloupes, Casabas, Crenshaws, Honeydews, Honey Balls, Muskmelons, Persians and hybrids of these)	aphids, spider mites, cucumber beetles	Make up to 2 applications per year – at least 10 days apart. Do not apply within 1 day of harvest.	½ to 1¼ fl. oz. to cover 1,000 to 3,500 sq. ft.	Do not exceed 1¼ fl. oz./1000 sq. ft. per single application.
Watermelons	aphids, spider mites, cucumber beetles	Make up to 2 applications per year – at least 10 days apart. Do not apply within 1 day of harvest.	½ to 1½ fl. oz. to cover 1,000 to 3,500 sq. ft.	Do not exceed 1½ fl. oz./1000 sq. ft. per single application.
Squash - summer	aphids, spider mites, pickleworm, squash vine borers, cucumber beetles	Make up to 2 applications per year – at least 10 days apart. Do not apply within 1 day of harvest.	½ to 2 fl. oz. to cover 1,000 to 3,500 sq. ft.	Do not exceed 2 fl. oz./1000 sq. ft. per single application.



<b>Crop</b>	<b>Insects</b>	<b>When to Apply</b>	<b>Amount/Gal. Water</b>	<b>Comments</b>
Squash - winter	aphids, spider mites, pickleworm, squash, vine borers, cucumber beetles	Make up to 2 applications per year – at least 10 days apart. Do not apply within 1 day of harvest.	½ to 1¼ fl. oz. to cover 1,000 to 3,500 sq. ft.	Do not exceed 1¼ fl. oz./1000 sq. ft. per single application.
Cucumber	aphids, spider mites, cucumber beetles	Make up to 2 applications per year – at least 10 days apart. Do not apply within 1 day of harvest.	½ to 2 fl. oz. to cover 1,000 to 3,500 sq. ft.	Do not exceed 2 fl. oz./1000 sq. ft. per single application.
Broccoli, Brussels Sprouts, Cauliflower, Watercress	aphids, diamond back moth caterpillars	Make up to 2 applications per year – at least 10 days apart. Do not apply within 2 days of harvest.	½ to 1½ fl. oz. to cover 1,000 to 3,500 sq. ft.	Do not exceed ½ fl. oz./1000 sq. ft. per single application.
Cabbage	aphids, diamond back moth caterpillars	Make up to 2 applications per year – at least 10 days apart. Do not apply within 7 days of harvest.	½ to 1½ fl. oz. to cover 1,000 to 3,500 sq. ft.	Do not exceed ½ fl. oz./1000 sq. ft. per single application.
Collards	aphids, diamond back moth caterpillars, harlequin cabbage bug	Make up to 2 applications per year – at least 10 days apart. Do not apply within 7 days of harvest.	½ to 1¼ fl. oz. to cover 1,000 to 3,500 sq. ft.	Do not exceed 1¼ fl. oz./1000 sq. ft. per single application.
Dandelions, Kohlrabi	aphids	Make up to 2 applications per year – at least 10 days apart. Do not apply within 7 days of harvest.	½ to 1½ fl. oz. to cover 1,000 to 3,500 sq. ft.	Do not exceed 1½ fl. oz./1000 sq. ft. per single application.

Crop	Insects	When to Apply	Amount/Gal. Water	Comments
Kale, Mustard Greens	aphids, flea beetles	Make up to 2 applications per year – at least 10 days apart. Do not apply within 7 days of harvest.	½ to 1½ fl. oz. to cover 1,000 to 3,500 sq. ft.	Do not exceed 1¼ fl. oz./1000 sq. ft. per single application.
Parsley	aphids	Make up to 2 applications per year – at least 10 days apart. Do not apply within 7 days of harvest.	½ to 1½ fl. oz. to cover 1,000 to 3,500 sq. ft.	Do not exceed 1½ fl. oz./1000 sq. ft. per single application.
Swiss Chard	aphids	Make up to 2 applications per year – at least 10 days apart. Do not apply within 14 days of harvest.	½ to 1½ fl. oz. to cover 1,000 to 3,500 sq. ft.	Do not exceed 1½ fl. oz./1000 sq. ft. per single application.
Turnips	aphids	Make up to 2 applications per year – at least 10 days apart for turnip greens and 10 days apart for turnip roots. Do not apply within 7 days of harvest.	½ to 1½ fl. oz. to cover 1,000 to 3,500 sq. ft.	Do not exceed 1½ fl. oz./1000 sq. ft. per single application.
Water-cress	aphids	Make up to 2 applications per year – at least 10 days apart. Do not apply within 3 days of harvest.	½ to 1½ fl. oz. to cover 1,000 to 3,500 sq. ft.	Do not exceed 1½ fl. oz./1000 sq. ft. per single application.
Celery	spider mites, aphids	Make up to 2 applications per year – at least 10 days apart. Do not apply within 7 days of harvest.	½ to 1½ fl. oz. to cover 1,000 to 3,500 sq. ft.	Do not exceed 1½ fl. oz./1000 sq. ft. per single application.
Spinach	aphids	Make up to 2 applications per year – at least 10 days apart. Do not apply within 7 days of harvest.	½ to 1½ fl. oz. to cover 1,000 to 3,500 sq. ft.	Do not exceed 1¼ fl. oz./1000 sq. ft. per single application.
Carrots	aphids, leafhoppers	Make up to 2 applications per year – at least 10 days apart. Do not apply within 7 days of harvest.	½ to 1½ fl. oz. to cover 1,000 to 3,500 sq. ft.	Do not exceed 1½ fl. oz./1000 sq. ft. per single application.

Crop	Insects	When to Apply	Amount/Gal. Water	Comments
Beets (garden) Do not apply to sugar beets	aphids, leafhoppers	Make up to 2 applications per year—at least 10 days apart. Do not apply within 7 days of harvest.	½ to 1½ fl. oz. to cover 1,000 to 3,500 sq. ft.	Do not exceed 1½ fl. oz./1000 sq. ft. per single application.
Endive	aphids, mites	Make up to 2 applications per year—at least 10 days apart. Do not apply within 7 days of harvest.	½ to 1½ fl. oz. to cover 1,000 to 3,500 sq. ft.	Do not exceed 1½ fl. oz./1000 sq. ft. per single application.
Apples	Woolly apple aphid, bud moth, Forbes scale, green apple aphid, rosy apple aphid, mealybug, codling moth, plum curculio, red banded leaf roller, tent caterpillar	Start to spray early in season. Make up to 2 applications per year - at least 10 days apart. Do not spray during blossom period. Do not apply within 1 day of harvest.	½ to 1½ fl. oz. to cover 1,000 to 3,500 sq. ft.	Do not exceed 1½ fl. oz./1000 sq. ft. per single application. May cause injury to Cortland and McIntosh varieties.
Apricots	codling moth, orange tortrix, terrapin scale, soft brown scale, aphids	Start to spray early in season. Make up to 2 applications per year – at least 10 days apart. Do not spray during blossom period. Do not apply within 6 days of harvest.	½ to 1½ fl. oz. to cover 1,000 to 3,500 sq. ft.	Do not exceed 1½ fl. oz./1000 sq. ft. per single application.
Cherries	black cherry aphid, fruit tree roller, cherry fruit fly, bud moth, mealy plum aphid	Start to spray early in season. Make up to 2 applications per year – at least 10 days apart. Do not spray during blossom period. Do not apply within 3 days of harvest.	½ to 2 fl. oz. to cover 1,000 to 3,500 sq. ft.	Do not exceed 2 fl. oz./1000 sq. ft. per single application.

Crop	Insects	When to Apply	Amount/ Gal. Water	Comments
Peaches	Oriental fruit moth, plum curculio; green peach, black cherry, black peach, rusty plum aphids, Japanese beetle; terrapin, cotony peach scales	Start to spray early in season. Make up to 2 applications per year – at least 11 days apart. Do not spray during blossom period. Do not apply within 7 days of harvest.	1 to 3 fl. oz. to cover 1,000 to 3,500 sq. ft.	Do not exceed 3 fl. oz./1000 sq. ft. per single application.
Citrus – grapefruit, lemons, limes, oranges, tangélines, tangelos	California red, yellow, purple, black (single and off brooded), soft, citricola scales; Florida red and purple scales (light & medium infestations); thrips	Start to spray early in season. Make up to 2 applications per year – at least 30 days apart. Do not spray during blossom period. Do not apply within 7 days of harvest.	½ to 1½ fl. oz. to cover 1,000 to 3,500 sq. ft.	Do not exceed 1½ fl. oz./1000 sq. ft. per single application.
Kumquats	California red, yellow, purple, black (single and off brooded), soft, citricola scales; Florida red and purple scales (light & medium infestations); thrips	Make 1 application per year. Do not spray during blossom period. Do not apply within 7 days of harvest.	½ to 1½ fl. oz. to cover 1,000 to 3,500 sq. ft.	Do not exceed 1½ fl. oz./1000 sq. ft. per single application.
Pears	mealybugs, mites, pear psylla, codling moth, plum curculio, fruit tree & red banded leaf rollers	Start to spray early in season. Make up to 2 applications per year – at least 10 days apart. Do not spray during blossom period. Do not apply within 1 day of harvest.	½ to 1½ fl. oz. to cover 1,000 to 3,500 sq. ft.	Do not exceed 1½ fl. oz./1000 sq. ft. per single application.
Blackberries, Boysenberries, Dewberries, Loganberries, Raspberries	mites, thrips, leafhoppers, Japanese beetles, aphids, rose scale, sap beetle	Make up to 2 applications per year – at least 10 days apart. Do not apply within 1 day of harvest.	1 to 2½ fl. oz. to cover 1,000 to 3,500 sq. ft.	Do not exceed 2½ fl. oz./1000 sq. ft. per single application.

Crop	Insects	When to Apply	Amount/Gal. Water	Comments
Blue-berries	Japanese beetle	Make up to 2 applications per year – at least 10 days apart. Do not apply within 1 day of harvest.	½ to 1½ fl. oz. to cover 1,000 to 3,500 sq. ft.	Do not exceed 1½ fl. oz./1000 sq. ft. per single application.
Ornamental herbaceous plants (Roses, Chrysanthemums, Carnations, Flower Gardens), Ornamental non-flowering plants, Ornamental woody shrubs and vines	aphids, mealybugs, spider mites, whitefly, four-lined plant bug, Japanese beetle, potato leafhopper, tarnished plant bug, thrips, rose leafhoppers, European pine shoot moth, birch leaf miner, boxwood leaf miner, bagworms, tent caterpillar, oak kermes, azalea, pine leaf, magnolia, Fletcher, Florida red, juniper, black, scurfy, Euonymus, oyster shell, monterey pine, soft, pine needle scales, two-spotted mite, millipedes, springtails, sowbugs	Spray thoroughly both top and undersides of leaves until slightly dripping as soon as insects appear. For woody shrubs and vines do not exceed 2 applications per year – at least 10 days apart.	1 to 3 fl. oz. to cover 1,000 sq. ft.	Do not exceed 3 fl. oz./1000 sq. ft. per single application.  Injury may occur on ferns, hickory, viburnum, lantana, crassula and canaerti juniper.

## MOSQUITOES

Spray Application: Mix 5 fl. oz. this product in 1 gallon of water or oil-based carrier (such as kerosene, fuel oil or diesel oil). Apply as an area spray with a pump or tank lawn & garden sprayer with nozzle adjusted to a fine spray mist. Do not exceed 2½ gallons of spray mixture per acre per day when applying at the 5 fl. oz. rate. For heavy infestations, increase the amount of this product to 12 fl. oz. per gallon. Do not exceed 1 gallon of spray mixture per acre per day when applying at the 12 fl. oz. rate. Repeat applications as necessary. Avoid applying oil-based formulations to plants as injury may occur.

**Fogger Application:** Mix 5 fl. oz. this product in 1 gallon of water or oil-based carrier (such as kerosene, fuel oil or diesel oil). Apply using a thermal fogging unit. Do not exceed 2½ gallons of dilute mixture per acre per day when applying at the 5 fl. oz. rate. For heavy infestations, increase the amount of this product to 12 fl. oz. per gallon. Do not exceed 1 gallon of dilute mixture per acre per day when applying at the 12 fl. oz. rate. Repeat applications as necessary. Avoid applying oil-based formulations to plants as injury may occur.

### STORAGE AND DISPOSAL

Do not contaminate water, food, or feed by storage or disposal. **Pesticide Storage:** This product should be stored in the original container in a secure dry place. Do not contaminate with other pesticides or fertilizers. The product should never be heated above 55°C (131°F), and should not be stored for long periods of time at a temperature in excess of 25°C (77°F). Store and transport in an upright position. **Pesticide Disposal:** *If partly filled-* Call your local solid waste agency for disposal instructions. Never place unused product down any indoor or outdoor drain. Promptly clean up spills with absorbent material; discard used material in trash. **Container Disposal:** *If empty-* Nonrefillable container. Do not reuse or refill this container. Offer for recycling if available, or place in trash.

### FIRST AID

<b>If Swallowed:</b>	<ul style="list-style-type: none"><li>• Call a poison control center or doctor immediately for treatment advice.</li><li>• Do not give any liquid to the person.</li><li>• Do not induce vomiting unless told to by a poison control center or doctor.</li><li>• Do not give anything by mouth to an unconscious person.</li></ul>
<b>If on Skin or Clothing:</b>	<ul style="list-style-type: none"><li>• Take off contaminated clothing.</li><li>• Rinse skin immediately with plenty of water for 15-20 minutes.</li><li>• Call a poison control center or doctor for treatment advice.</li></ul>
<b>If in Eyes:</b>	<ul style="list-style-type: none"><li>• Hold eye open and rinse slowly and gently with water for 15-20 minutes.</li><li>• Remove contact lenses, if present, after the first 5 minutes, then continue rinsing eye.</li><li>• Call a poison control center or doctor for treatment advice.</li></ul>
Have the product container or label with you when calling a poison control center or doctor, or going for treatment. You may also contact the National Pesticide Information Center at 1-800-858-7378 for emergency medical treatment information (including pesticide incidents or health concerns).	
<b>NOTE TO PHYSICIAN:</b> This product may cause cholinesterase inhibition. Atropine is antidotal. 2-PAM may be effective as an adjunct to atropine. Contains petroleum distillate. May pose an aspiration hazard.	

**PRECAUTIONARY STATEMENTS  
HAZARDS TO HUMANS AND DOMESTIC ANIMALS**

**CAUTION:** Harmful if swallowed or absorbed through skin. Causes moderate eye irritation. Avoid contact with eyes, skin, or clothing. Wear long sleeved shirt, long pants, shoes and socks.

**ENVIRONMENTAL HAZARDS**

To protect the environment, do not allow pesticide to enter or run off into storm drains, drainage ditches, gutters or surface waters. Rinsing application equipment over the treated area will help avoid run off to water bodies or drainage systems.

This product is highly toxic to bees exposed to direct treatment on blooming crops or weeds. Do not apply this product or allow it to drift to blooming crops or weeds while bees are actively visiting the treatment area.

This pesticide is toxic to fish and aquatic invertebrates. Drift and runoff may be hazardous to aquatic organisms in water adjacent to treated areas.

**PHYSICAL OR CHEMICAL HAZARDS**

Combustible: Do not use or store near heat or open flame.

Seller warrants that this product complies with the specifications expressed in this label. To the extent consistent with applicable law, Seller makes no other warranties, and disclaims all other warranties, express or implied, including but not limited to warranties of merchantability and fitness for the intended purpose. To the extent consistent with applicable law, Seller's liability or default, breach or failure under this label shall be limited to the amount of the purchase price. To the extent consistent with applicable law, Seller shall have no liability for consequential damages.

ACTIVE INGREDIENT:  
Malathion (CAS #121-75-5).....50%  
OTHER INGREDIENTS:.....50%  
TOTAL.....100%

### FIRST AID

**If Swallowed:** Call poison control center or doctor immediately for treatment advice. Do not give any liquid to the person. Do not induce vomiting unless told to by a poison control center or doctor. Do not give anything by mouth to an unconscious person.

**If on Skin or Clothing:** Take off contaminated clothing. Rinse skin immediately with plenty of water for 15-20 minutes. Call a poison control center or doctor for treatment advice.

**If in Eyes:** Hold eye open and rinse slowly and gently with water for 15-20 minutes. Remove contact lenses, if present, after the first 5 minutes, then continue rinsing eye. Call a poison control center or doctor for treatment advice.

Have the product container or label with you when calling a poison control center or doctor, or going for treatment. You may also contact the National Pesticide Information Center at 1-800-858-7378 for emergency medical treatment information (including pesticide incidents or health concerns).

**NOTE TO PHYSICIAN:** This product may cause cholinesterase inhibition. Atropine is antidotal. 2-PAM may be effective as an adjunct to atropine. Contains petroleum distillate. May pose an aspiration hazard.

### PRECAUTIONARY STATEMENTS

#### HAZARDS TO HUMANS AND DOMESTIC ANIMALS

**CAUTION:** Harmful if swallowed or absorbed through skin. Causes moderate eye irritation. Avoid contact with eyes, skin, or clothing. Wear long sleeved shirt, long pants, shoes and socks.

#### STORAGE AND DISPOSAL

Do not contaminate water, food, or feed by storage or disposal.

**Pesticide Storage:** This product should be stored in the original container in a secure dry place. Do not contaminate with other pesticides or fertilizers. The product should never be heated above 55°C (131°F), and should not be stored for long periods of time at a temperature in excess of 25°C (77°F). Store and transport in an upright position.

**Pesticide Disposal:** *If partly filled:* Call your local solid waste agency for disposal instructions. Never place unused product down any indoor or outdoor drain. Promptly clean up spills with absorbent material; discard used material in trash.

**Container Disposal:** *If empty:* Nonrefillable container. Do not reuse or refill this container. Offer for recycling if available, or place in trash.

See attached booklet for complete Directions for Use and Precautionary Statements.

©Bonide Products, LLC  
6301 Sutliff Road, Oriskany, NY 13424

EPA Reg. No. 4-99  
EPA Est. No. 4-NY-1

Lift & Peel Here